

# Technical data sheet

## Product features



### Cooling cabinet 700 l LED light, pastry version EN 40x60, stainless steel

<b>Model</b>	<b>SAP Code</b>	00012373
--------------	-----------------	----------



- GN / EN size in device: GN 2/1
- Chamber volume [l]: 458
- Minimum device temperature [°C]: -2
- Maximum device temperature [°C]: 7
- Insulation thickness [mm]: 90
- Control type: Digital
- Interior lighting: Yes
- Door lock: Yes
- Automatic defrost: Yes
- HACCP: Yes
- Annual energy consumption [kWh]: 332

<b>SAP Code</b>	00012373	<b>Gross Volume [m3]</b>	1.445
<b>Net Width [mm]</b>	847	<b>Net Volume [m3]</b>	1.298
<b>Net Depth [mm]</b>	733	<b>Number of internal parts</b>	20
<b>Net Height [mm]</b>	2090	<b>Number of GN / EN</b>	24
<b>Net Weight [kg]</b>	127.00	<b>GN / EN size in device</b>	GN 2/1
<b>Power electric [kW]</b>	0.130	<b>Minimum device temperature [°C]</b>	-2
<b>Loading</b>	230 V / 1N - 50 Hz	<b>Maximum device temperature [°C]</b>	7
<b>Energy class</b>	B	<b>Refrigerant</b>	R290
<b>Chamber volume [l]</b>	458	<b>Climate class</b>	5

# Technical data sheet

Technical drawing

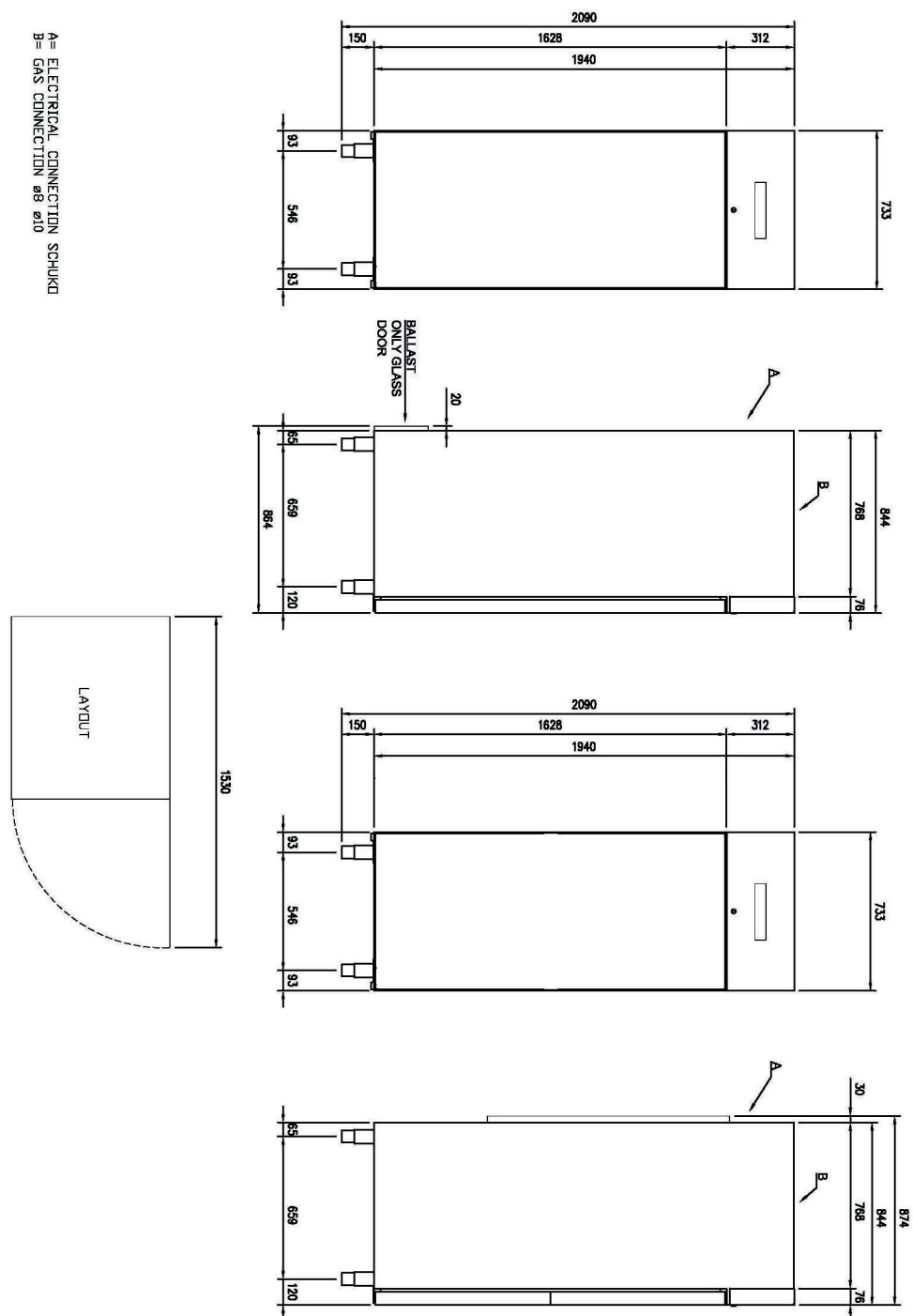


Cooling cabinet 700 l LED light, pastry version EN 40x60, stainless steel

Model

SAP Code

00012373



# Technical data sheet

## Product benefits



### Cooling cabinet 700 l LED light, pastry version EN 40x60, stainless steel

<b>Model</b>	<b>SAP Code</b>	00012373
--------------	-----------------	----------

- 1 Insulation 90mm**  
minimal losses
  - energy saving
- 2 Two-sided opening**  
location variability
  - greater operational efficiency
  - better kitchen ergonomics
- 3 All-stainless design**  
corrosion resistance
  - longer service life
  - health safety
- 4 Automatic defrosting**  
nothing needs to be watched
  - always working properly without extra operator requirements
- 5 Wheels, legs**  
variability
  - user comfort
- 6 High energy class**  
minimal energy loss  
high efficiency  
guaranteed chilled food
  - cost saving
  - hygienic safety

# Technical data sheet

Technical parameters



## Cooling cabinet 700 l LED light, pastry version EN 40x60, stainless steel

**Model**

**SAP Code**

00012373

**1. SAP Code:**

00012373

**2. Net Width [mm]:**

847

**3. Net Depth [mm]:**

733

**4. Net Height [mm]:**

2090

**5. Net Weight [kg]:**

127.00

**6. Gross Width [mm]:**

763

**7. Gross depth [mm]:**

873

**8. Gross Height [mm]:**

2170

**9. Gross Weight [kg]:**

140.35

**10. Device type:**

Electric unit

**11. Power electric [kW]:**

0.130

**12. Loading:**

230 V / 1N - 50 Hz

**13. Energy class:**

B

**14. Refrigerant:**

R290

**15. Material:**

AISI 304

**16. Exterior color of the device:**

Stainless steel

**17. Max ambient temperature [°C]:**

40

**18. Device properties 2:**

Bakery

**19. GN / EN size in device:**

GN 2/1

**20. Number of internal parts:**

20

**21. Number of GN / EN:**

24

**22. Chamber volume [l]:**

458

**23. Gross Volume [m3]:**

1.445

**24. Net Volume [m3]:**

1.298

**25. Adjustable feet:**

Yes

**26. Insulation thickness [mm]:**

90

**27. Number of doors:**

1

**28. Unit:**

Yes

# Technical data sheet

Technical parameters



## Cooling cabinet 700 l LED light, pastry version EN 40x60, stainless steel

**Model**

**SAP Code**

00012373

**29. Control type:**

Digital

**34. Minimum device temperature [°C]:**

-2

**30. Door lock:**

Yes

**35. Maximum device temperature [°C]:**

7

**31. Interior lighting:**

Yes

**36. Automatic defrost:**

Yes

**32. HACCP:**

Yes

**37. Climate class:**

5

**33. Annual energy consumption [kWh]:**

332

**38. Cross-section of conductors CU [mm<sup>2</sup>]:**

0,5

- Výkon (kW): 2,4-3,3 (230 V)